

**OKANAGAN LAKE FORESHORE  
INVENTORY AND MAPPING L**

**Appendix F: Summary Map of Kokanee  
Spawning Locationsp**

Map 1 of 1p

SCALE: 1:65 000p

ATE: 2005/10/15p

Regional District of Central Okanaganp

0p 1000p 2000p Meters



**isturbance Levelp**

- Lowp
- Moderatep
- Highp

- Kokanee Spawning Locationsp  
2001 - 2004 (MWLAP)p
- Historic Kokanee Spawning Locations p  
1972 - 2000 (MWLAP) p
- Administrative Boundaryp
- Waterbodyp
- Watercoursep

**isturbance Level (DL)L**

The Disturbance Level is a qualitative measurement of the overall health of the foreshore. It can be broken down into the categories Low, Medium or High.p

Low - No or limited signs of disturbance and foreshore impacts.  
Moderate - Moderate signs of disturbance and foreshore impacts.  
High - Extensive signs of disturbance and foreshore impacts. p

**CaveatsL**

Assumptions regarding the kokanee spawning data included in this report are key  
o understanding the applicability and limitations of the dataset. Detailed GPS data for kokanee spawning locations are limited to 2001 - 2004. Historic spawning data is compiled by reach break dating back to 1972 . As such, the user should understand the dataset represents only a portion of the kokanee spawning p information. p

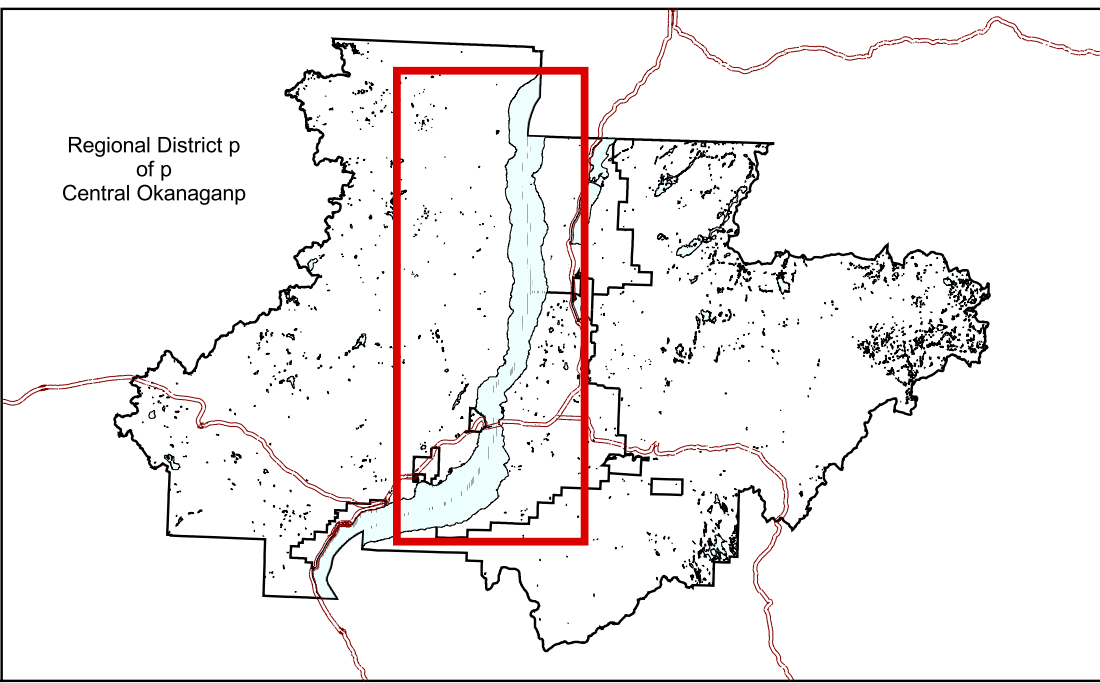
The following is an excerpt from the Caveats Section of the report:p

*Not all suitable kokanee spawning habitat is used in a given year. The amount of . kokanee spawning habitat available on Okanagan Lake is unknown, and with . kokanee numbers at an all time low, spawning occurs in only a percentage of the . available habitat. As the population rebounds to its historic level, re-colonization of . spawning habitat will likely occur. .*

*The overall kokanee population is currently at 10% of what it was in the early 1970s. Any spawning habitat used by these fish needs to be flagged as being critical for the population to persist.*

*Kokanee are mobile; an area that shows high spawning use one year, may be low use the following year.*

*The effort being expended by WLAP in observing spawning numbers and location. p limited. Spawning locations are only visited three times over the spawning period; therefore, it is likely that not all spawning occurrences are being recorded. .*



**Cartographic Data Sources and Project InformationL**

**Projection InformationL**

Projection: UTM; Datum: NAD83; Spheroid: GRS80, Zone 11p

**ata Source InformationL**

Regional District Boundaries: CDMS - Crown Land Registry Services, 1999:p

Regional District Electoral Area, Municipal Boundaries and First Nations Reserve Boundaries: p  
Regional District of Central Okanagan Cadastral Base - Regional District of Central Okanagan.p  
2002;p

Transportation Networks, Streams and Lakes; TRIM 2 - Land Data BC, 2001 and Regional  
istrict of Central Okanagan Sensitive Habitat Inventory and Mapping, 2004;  
Kokanee Spawning Information - Ministry of Water Land and Air Protection, 2005.p

This map is used for illustrative purposes only and should be used in conjunction with the  
Okanagan Lake Foreshore Inventory and Mapping Database.p

**CreditsL**

**Cartography:L**

Brent Magnanp  
Planning Services Department, Regional District of Central Okanagan, Kelowna, BC.p

**FundingL**

Regional District of Central Okanagan, Ministry of Water, Land and Air Protection, The Real  
Estate Foundation, City of Kelowna, District of Lake Country.p

*For Further Information Please Contact:.*

The Regional District of Central Okanagan Planning Services Department p

*Or Visit us on the Web at:*  
[www.regionaldistrict.com](http://www.regionaldistrict.com)