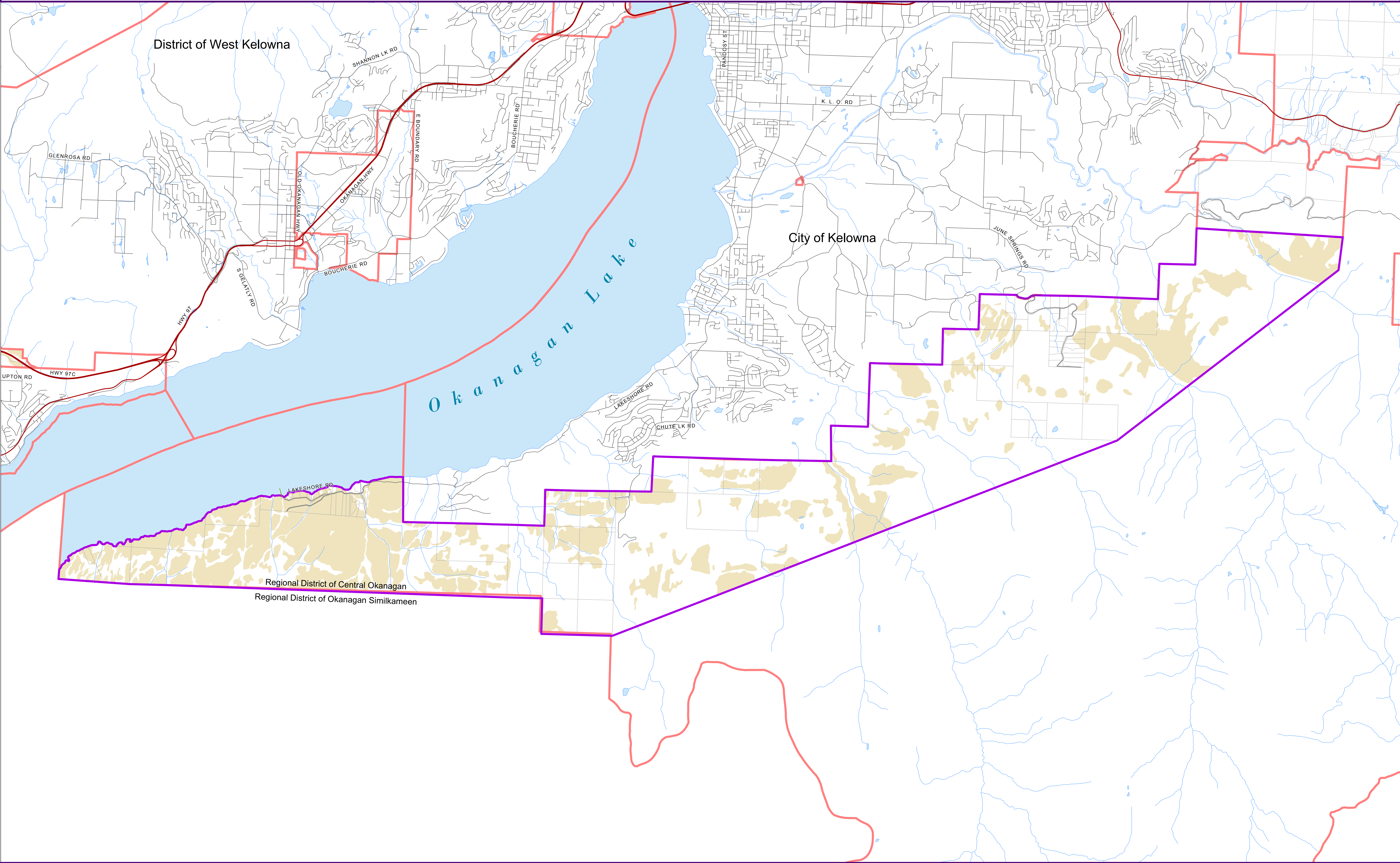
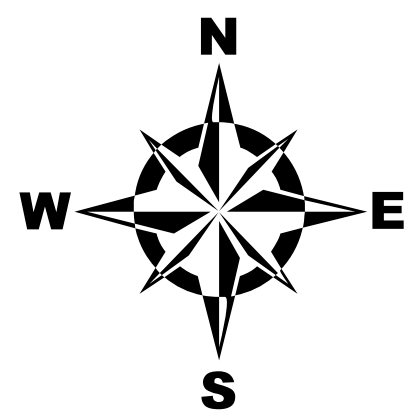


South Slopes Sensitive Terrestrial Ecosystem Development Permit Area



- Highway
- Street
- Lot Lines
- Streams
- South Slopes OCP Boundary
- Jurisdiction Boundaries
- Lakes and Ponds
- Sensitive Terrestrial Ecosystem Development Permit Area



South Slopes Official
Community Plan
Schedule 'F'
Bylaw No. 1304 Adopted : 14 June, 2012

Note:
This map has been consolidated for office purposes and includes information that is not part of the official Development Permit Area map. The Regional District makes no representation regarding the accuracy of this map and users are advised to refer to an updated, accurate copy of the map as required.

The logo for the Regional District of Central Okanagan, featuring a stylized mountain and water.

Latest Amending Bylaw # xxxx-xx

Consolidated to (date)